



Regione  
Lombardia

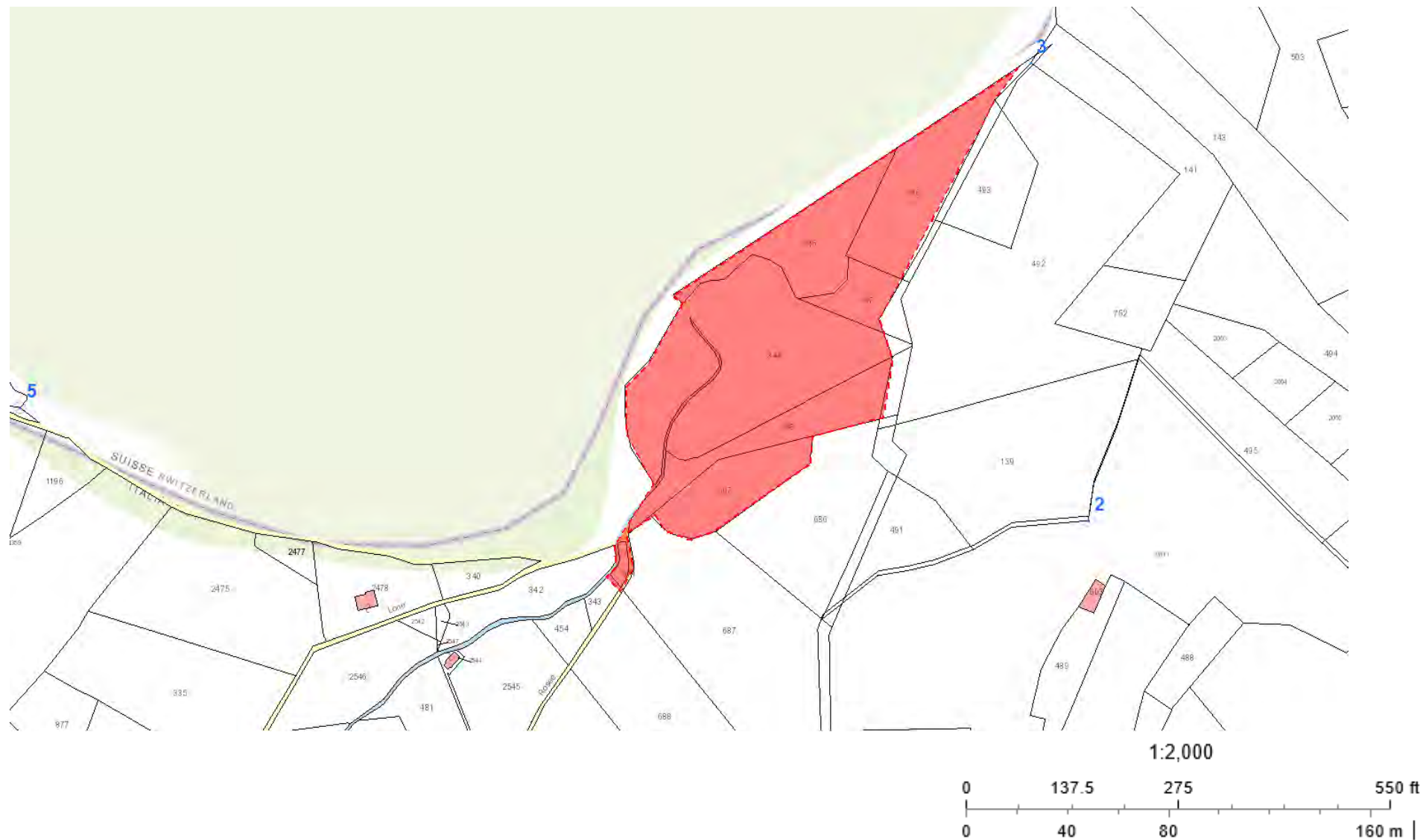


*PARCO REGIONALE SPINA VERDE*

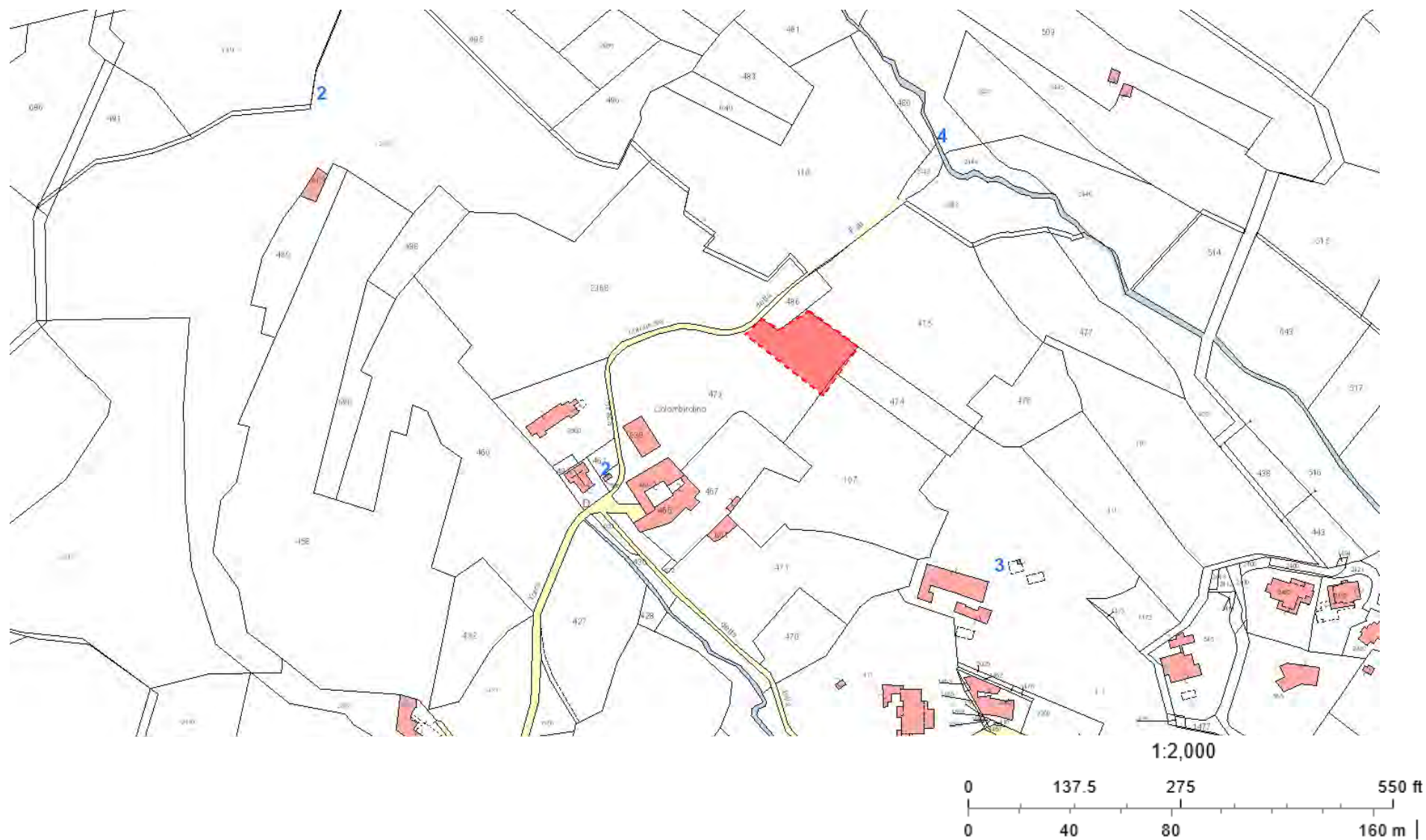
*Piano Territoriale di Coordinamento*

**ALLEGATO 1**  
**Ambiti di interesse Ecologico**  
**Art. 1 NTA**

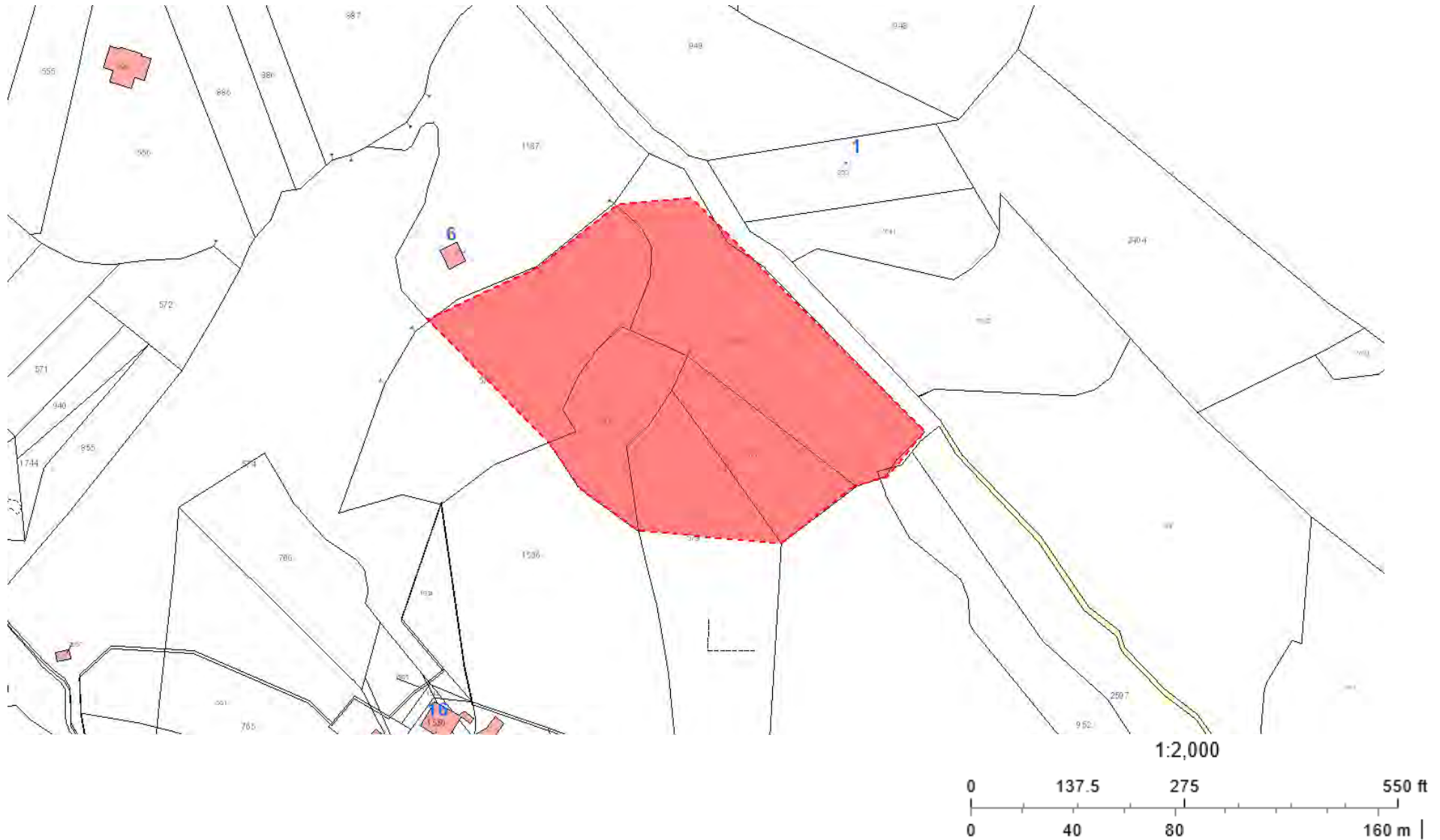
## Area Umida di Parè – AE.a



## Vasche di acque stagnanti Villa Colombirolino – AE.b

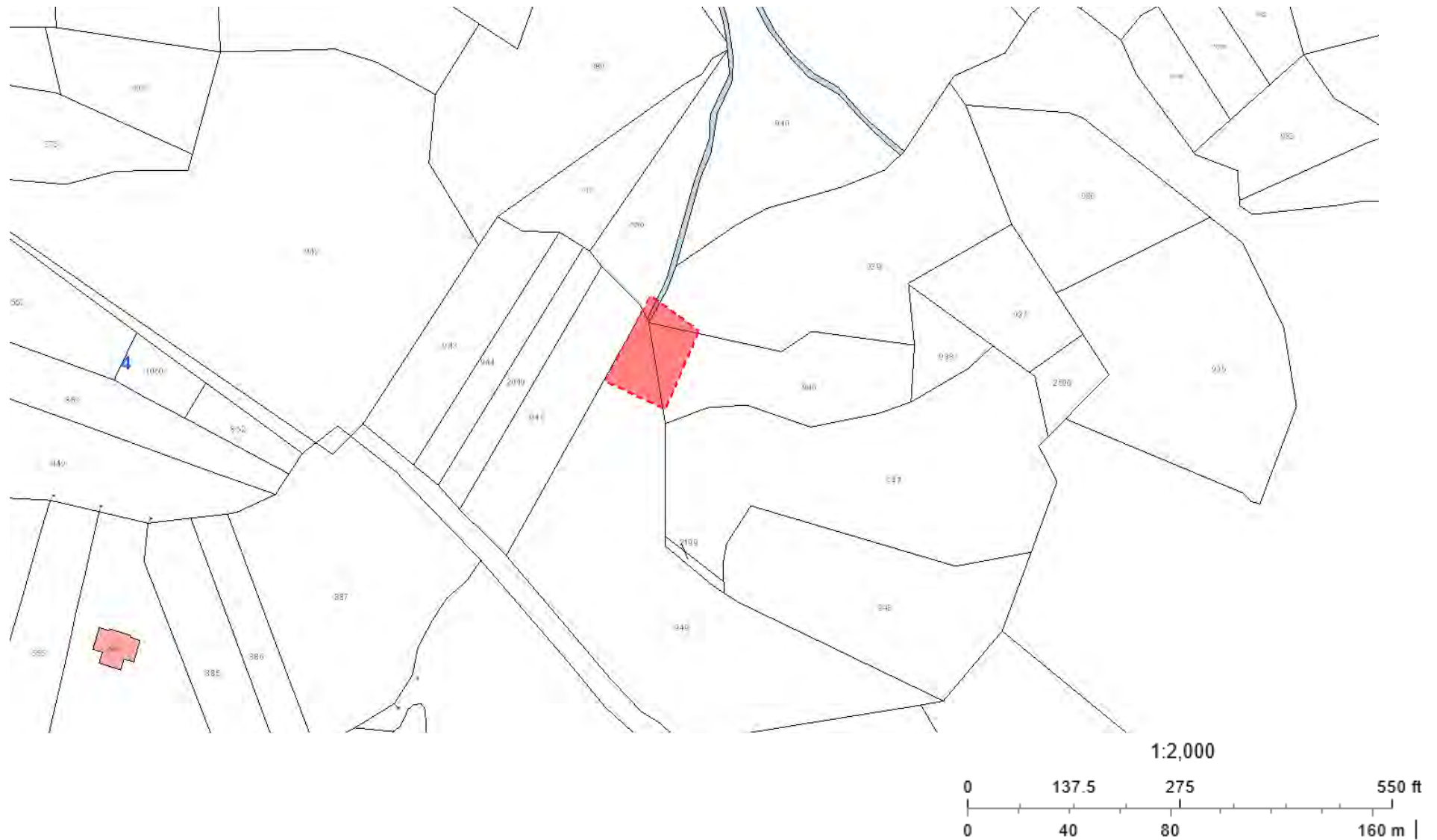


## Sasso di Cavallasca – AE.c

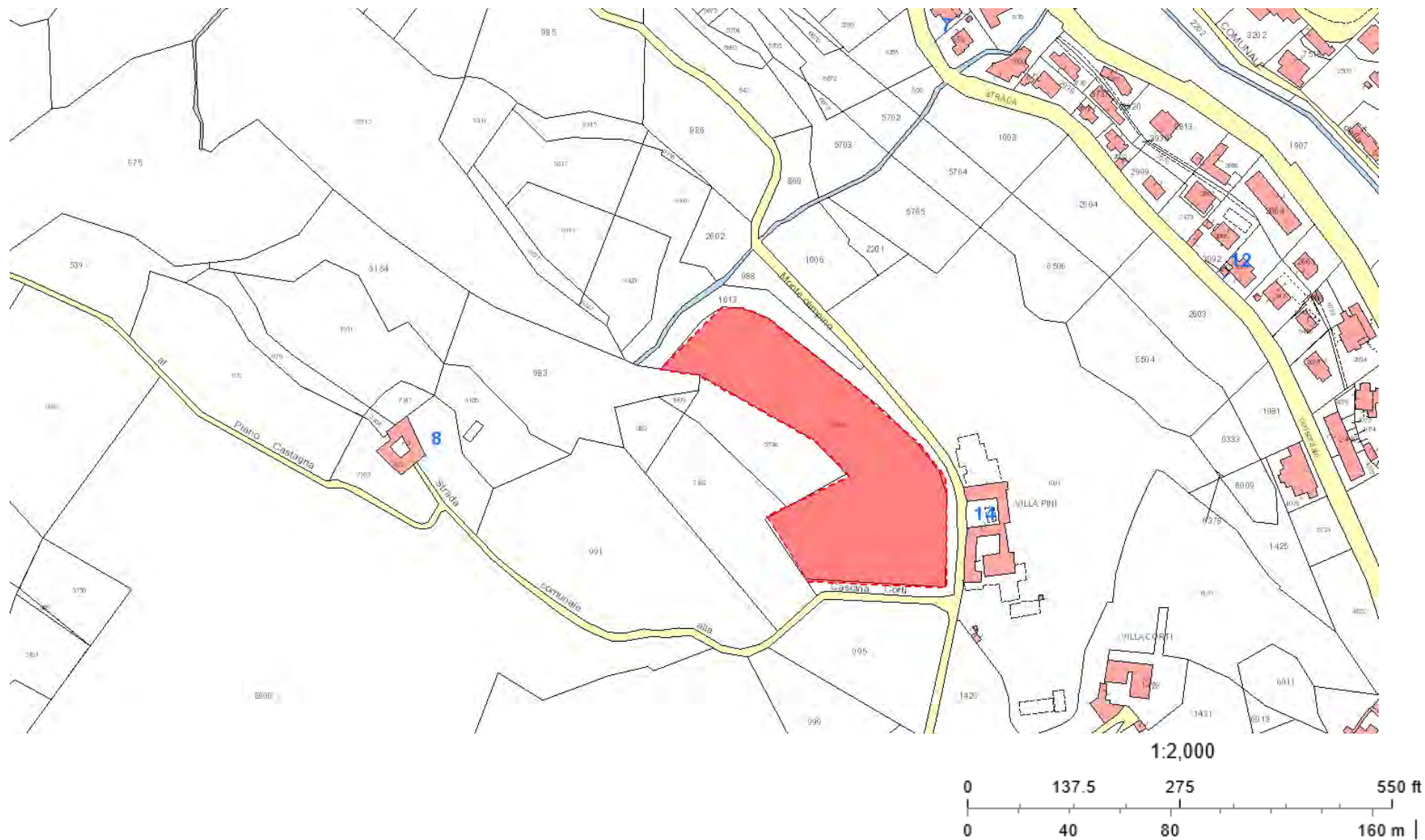




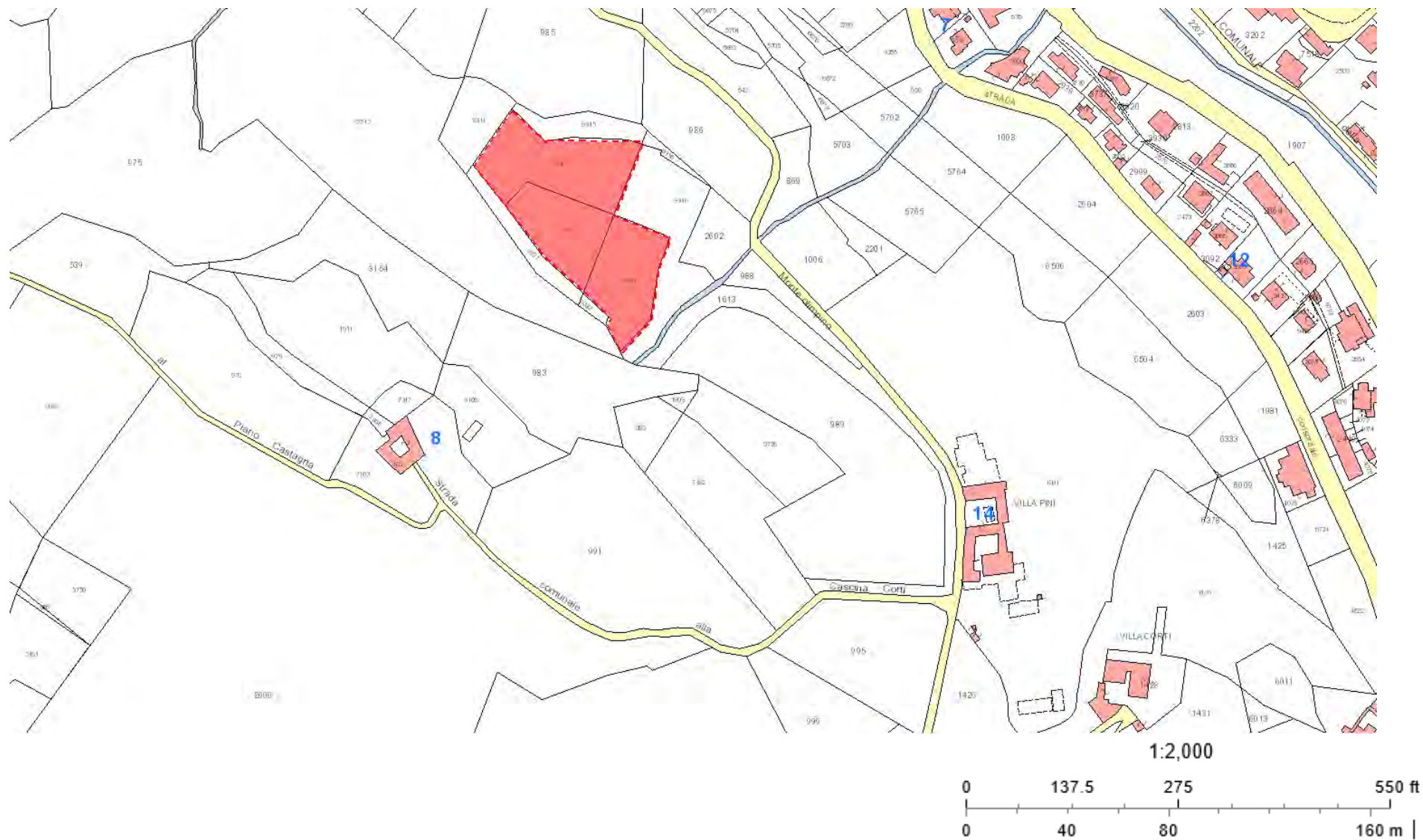
## Pozze di Cascina Viola – AE.d



## Prati di Cardano 1 – AE.e



## Prati di Cardano 2 – AE.e



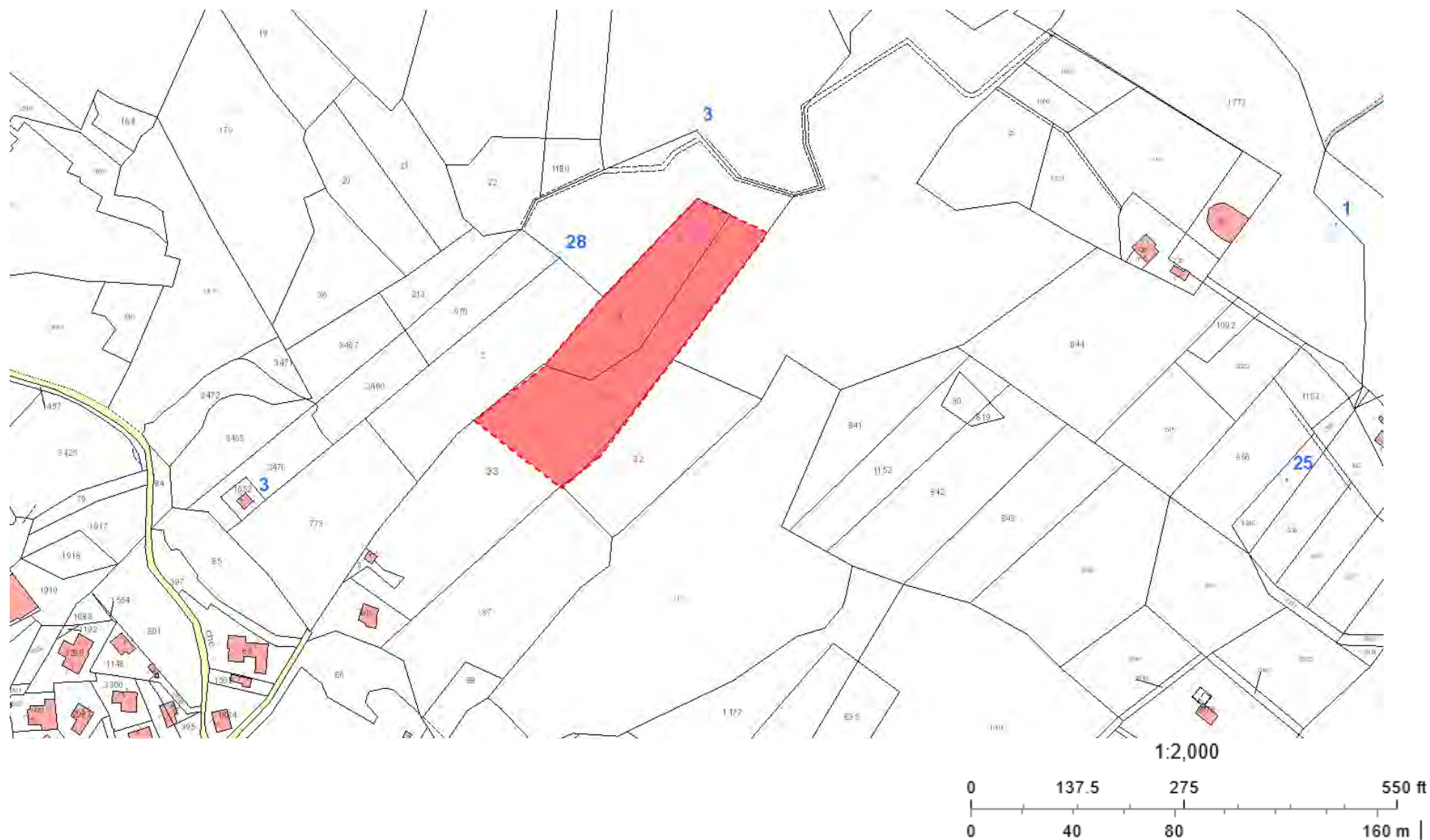


## Biotopo del laghetto temporaneo del Monte Croce – AE.f

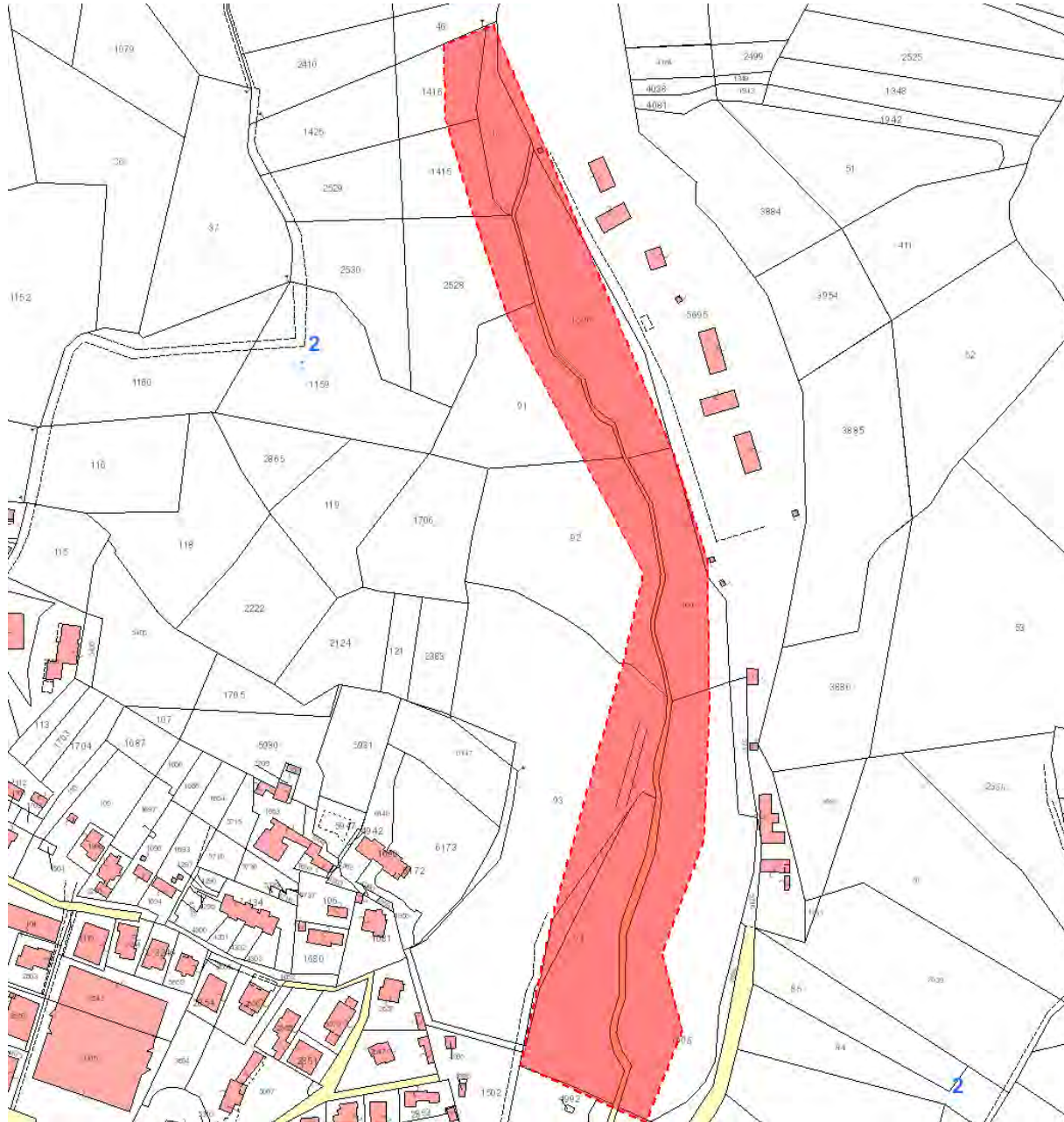




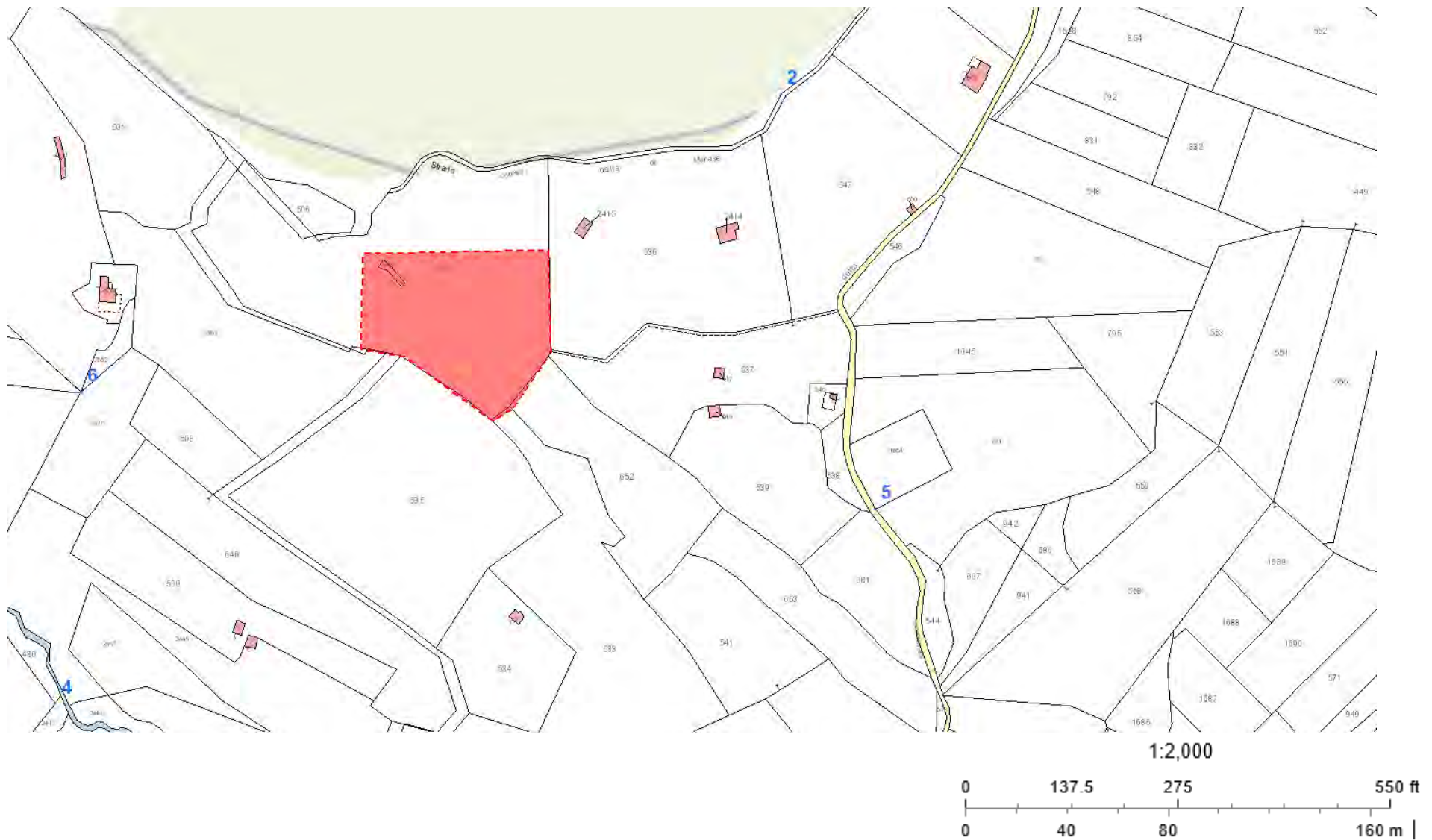
## Area umida della Mojenca – AE.g



## Torrente Segrada in Valbasca – AE.h

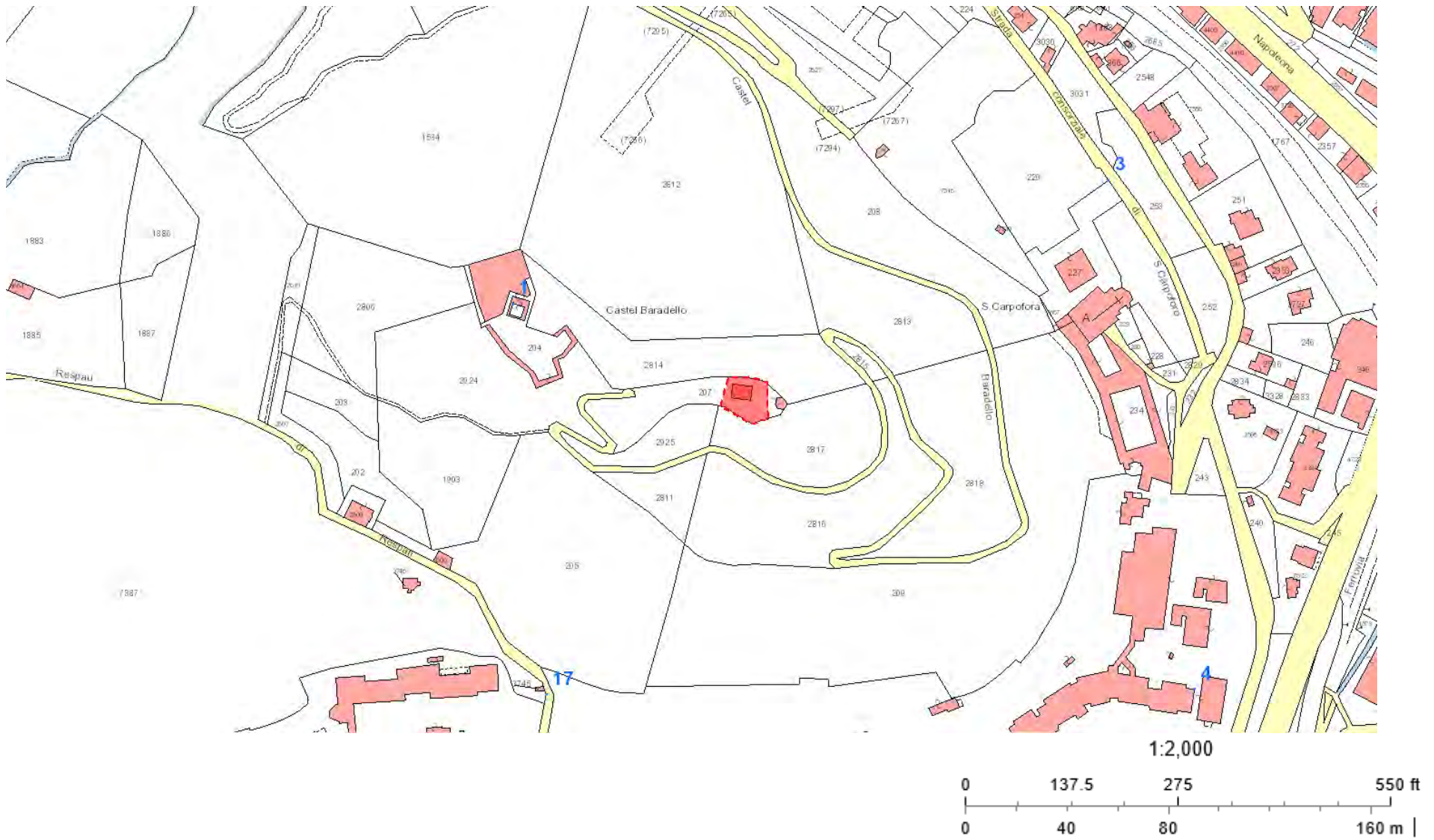


## Le Sorgenti del Seveso – AE.i





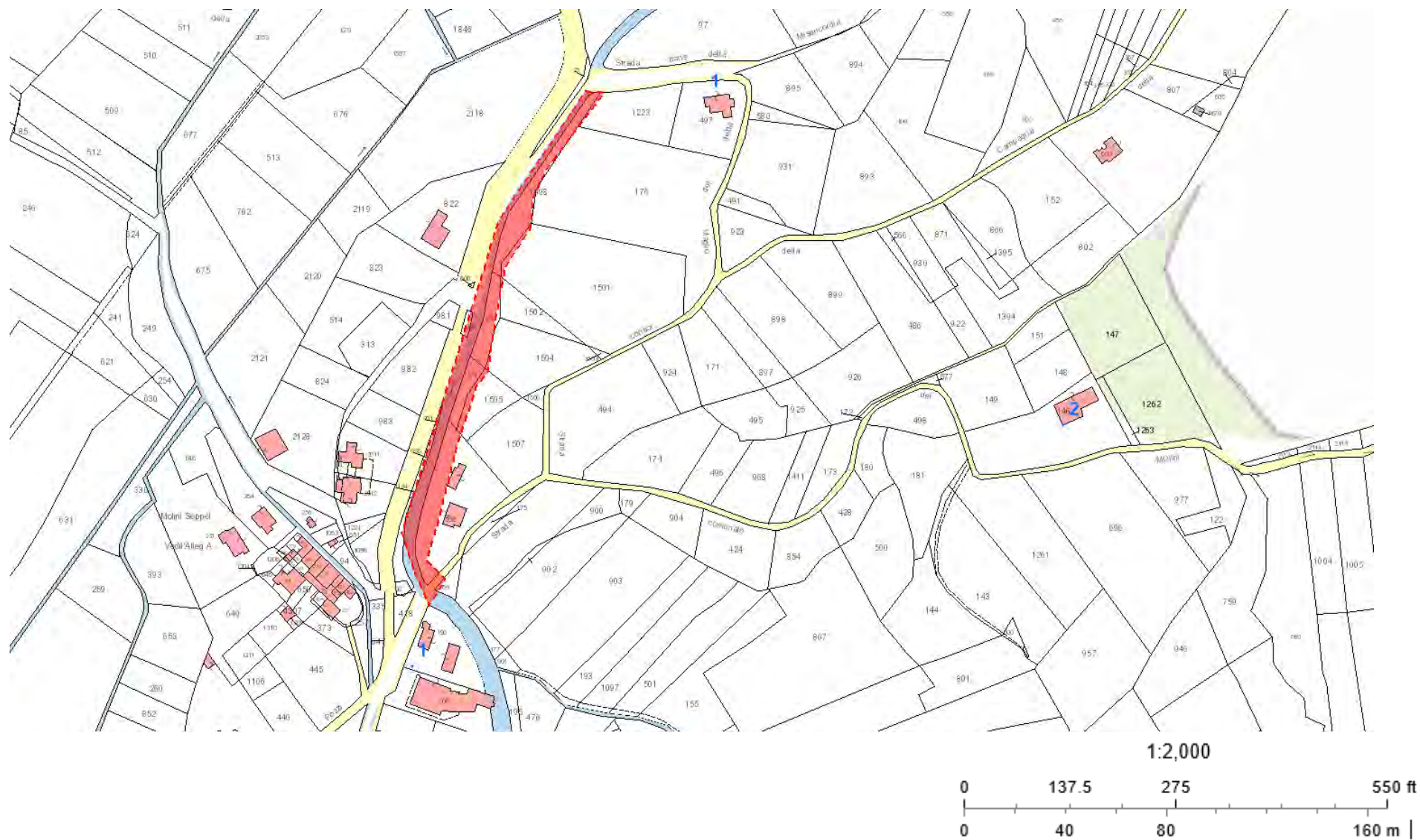
## La vasca storica di Piazza d'Armi presso il Baradello – AE.j







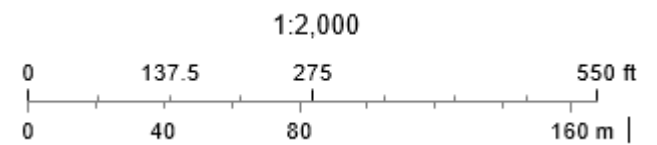
## Le sponde del torrente Faloppia – AE.I





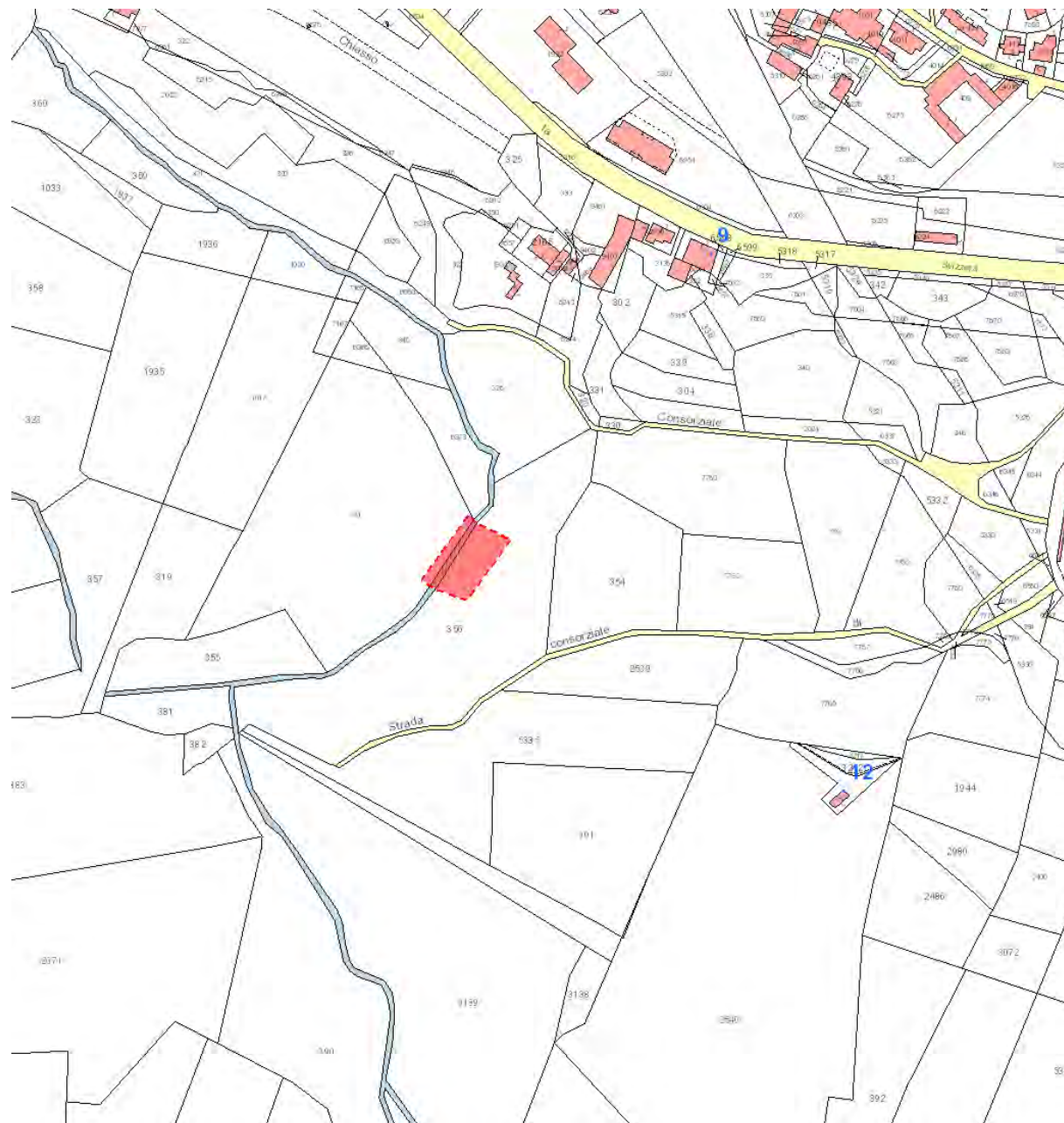


This is a cadastral map of a rural area in Italy. The map shows various land parcels, roads, and buildings. A large red dashed rectangle highlights a specific parcel in the center. The map includes various labels such as 'Strada comunale', 'Rispau di sotto', and 'Rispau'. Parcel numbers are scattered throughout, and some buildings are shaded in red.









## Area umida di Porta Sasso – AE.n